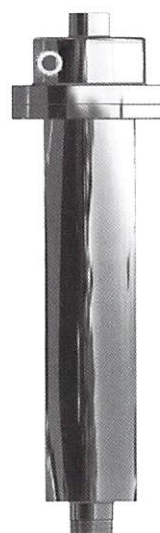


TRC

Proposal for coolant tank



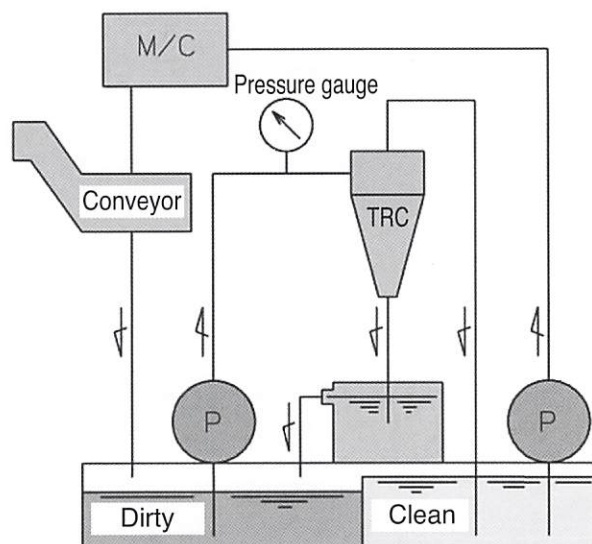
Solid-liquid separation of water soluble coolant liquid including sludge

Features

- Dirty liquid changes clean liquid.
 - Sludge elimination efficiency is more than 98 %.
(particle size : over 20 μ m)
 - Able to disassemble body of "CYCLONE." (easy to maintenance)
 - Sludge is eliminated from CYCLONE SYSTEM.
 - Able to filter magnetic (cast iron) and non-magnetic (aluminum alloy, abrasive grain)
 - Employing rubber in body prolongs service life and abrasion resistance.
- Inflow pressure to filter is no more than 0.1MPa

【Main body of CYCLONE】

Use cases

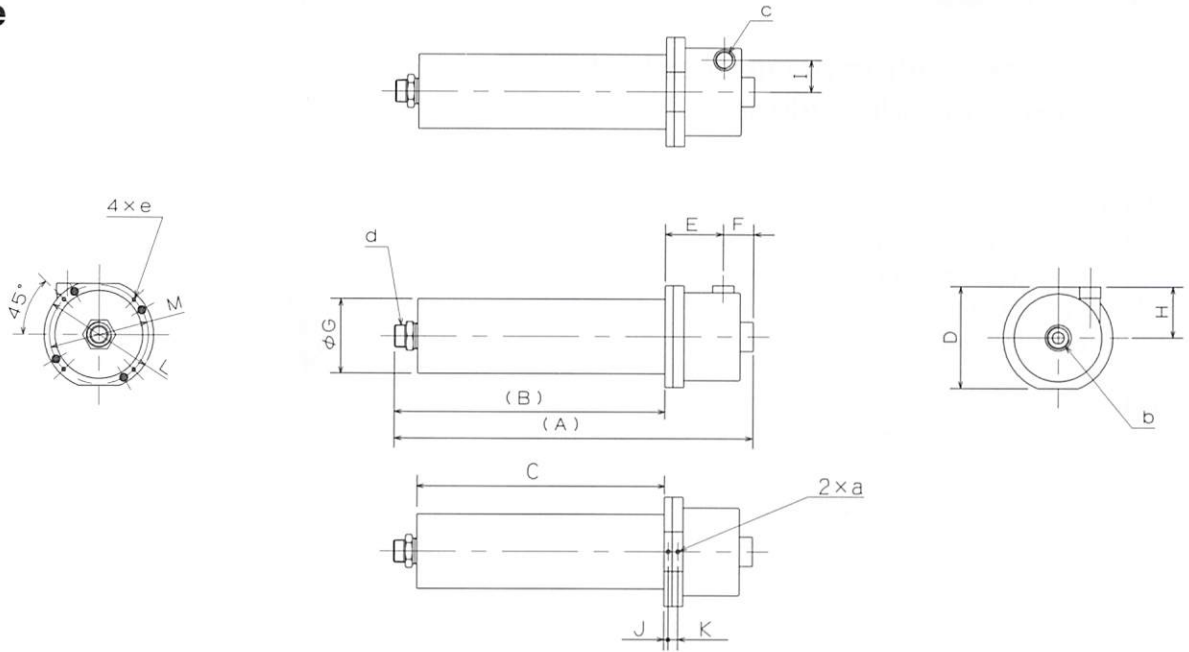


Specifications

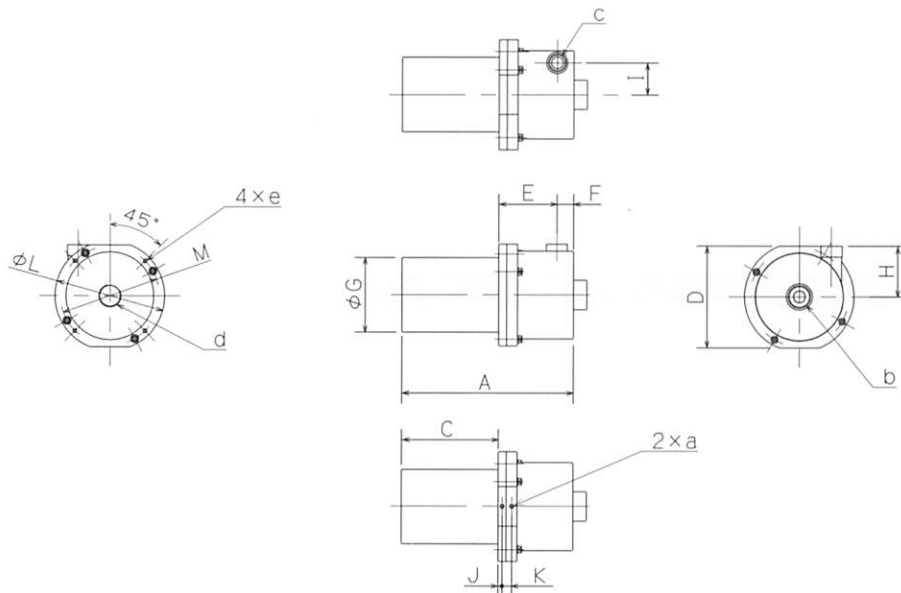
Model	TRC50N/TRC50SN			TRC100N/TRC100SN/TRC104		
	Inflow pressure (MPa)	0.3	0.2	0.1	0.3	0.2
Inlet flow (ℓ/min)	75	60	45	140	120	90
Amount of treated liquid (ℓ/min)	65	50	35	120	100	70
Applicable liquid	water soluble coolant liquid					
Temperature (°C)	0 - 50°C					
Specific Gravity of sludge	over 2.7					
Particle size	over 10 μ m					

Model TRC

Size



Dia. mm	Model	Dimensions mm																		Weight kg
		A	B	C	D	E	F	G	H	I	J	K	L	M	a	b	c	d	e	
25	TRC50N	560	452	408	146	59	49	89	73	41.5	7.5	18	152	133	M8×13	Rc1	Rc1/2	R1 1/4	M6×15	10.0
	TRC50SN	410	302	258	146	59	49	89	73	41.5	7.5	18	152	133	M8×13	Rc1	Rc1/2	R1 1/4	M6×15	8.1
40	TRC100N	675	509	465	192	109	57	140	96	60	7.5	18	206	186	M8×10	Rc1 1/2	Rc1	R1 1/4	M8×15	21.2
	TRC100SN	493	327	283	192	109	57	140	96	60	7.5	18	206	186	M8×10	Rc1 1/2	Rc1	R1 1/4	M8×15	16.1



Dia. mm	Model	Dimensions mm																	Weight kg
		A	C	D	E	F	G	H	I	J	K	L	M	a	b	c	d	e	
40	TRC104	348	182	192	109	57	140	96	60	7.5	18	206	186	M8×10	R1 1/2	Rc1	R1 1/2	M8×15	14.5